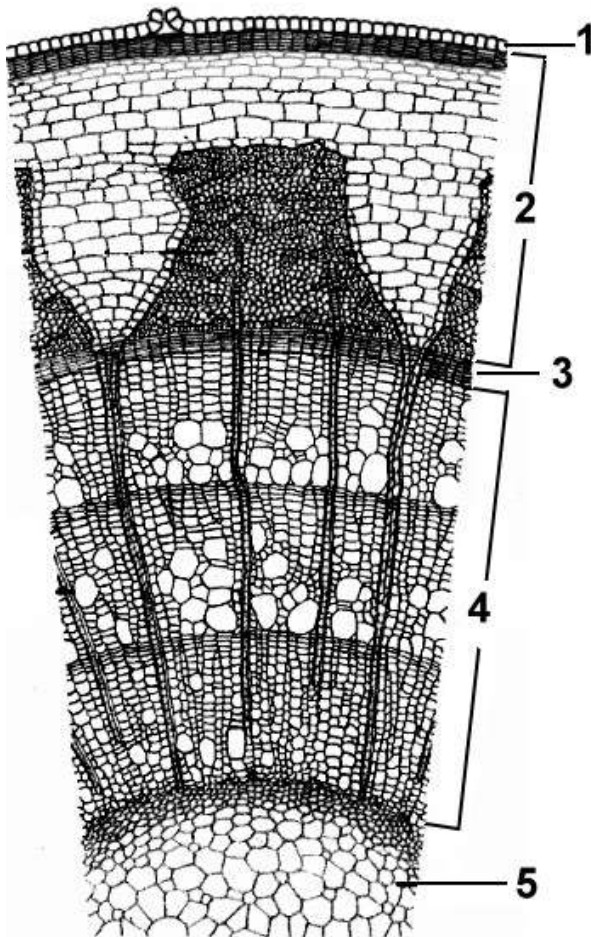
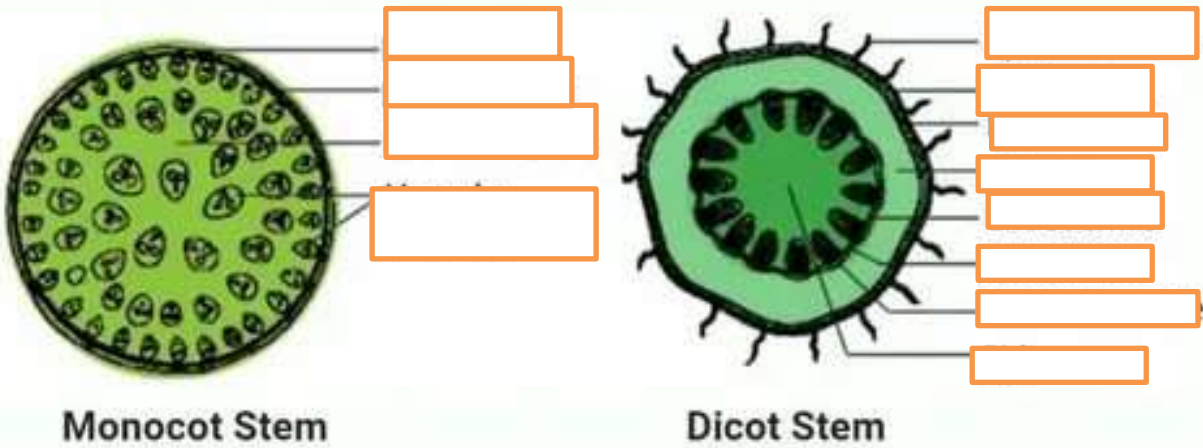


Topshiriqlar:

1. Complete the free areas.

Monocot and Dicot Stem



2. _____

Rasmda poyaning qalinlikka o'sishi uchun javob beradigan qatlam qanday raqam bilan belgilangan?

Poya qatlamlari bilan ularning tuzilish xususiyatlari va rasmda raqamlar bilan belgilangan funksiyalari o'rtasidagi muvofiqlikni aniqlang: birinchi ustunda berilgan har bir pozitsiya uchun ikkinchi ustundan tegishli pozitsiyani tanlang.

XUSUSIYATLARI	POYA QATLAMLARI
A) tomirlarga ega	1
B) elaksimon naychalarga ega	2
C) ko'tariluvchi tokni amalga oshiradi	3
F) pastga tushuvchi tokni amalga oshiradi	4
D) tarkibida floema bor	5
E) tarkibida ksilema	

3. Establish the sequence of stem layers from the top:

- A) cork
- B) core
- D) Lub
- E) Epidermis
- D) cambium
- E) wood

4. Answer the question.

1. Lub is characterized by the following features of its structure and function:

Choose one or more answers:

1. located inside the cambium
2. the conducting elements are dead cells
3. carries out water flow from the roots
4. in addition to conductive elements, the cell has basic and mechanical tissue
5. contains sieve-shaped tubes
6. conducting elements are living cells

2. The following structural features are characteristic of wood:

Choose one or more answers:

1. the conducting elements are living cells
2. located outside cambium
3. contains vessels
4. in addition to conductive elements, the cell has basic and mechanical tissue
5. carries out the flow of organic substances from the leaves
6. the conducting elements are dead cells

3. The following features of structure and function are characteristic of cambium:

Choose one or more answers:

characteristic of monocotyledonous plants

2. is an educational tissue
3. the lub is laid out
4. characteristic of bivalve plants
5. the wood is laid out.

5. The following features are characteristic of the cortex:

Choose one or more answers:

1. It adheres to the covering fabric
2. contains chewing gum
3. is a covering tissue
4. is part of wood
5. formed by different tissues
6. the inner part is made up of conductive tissue cells.