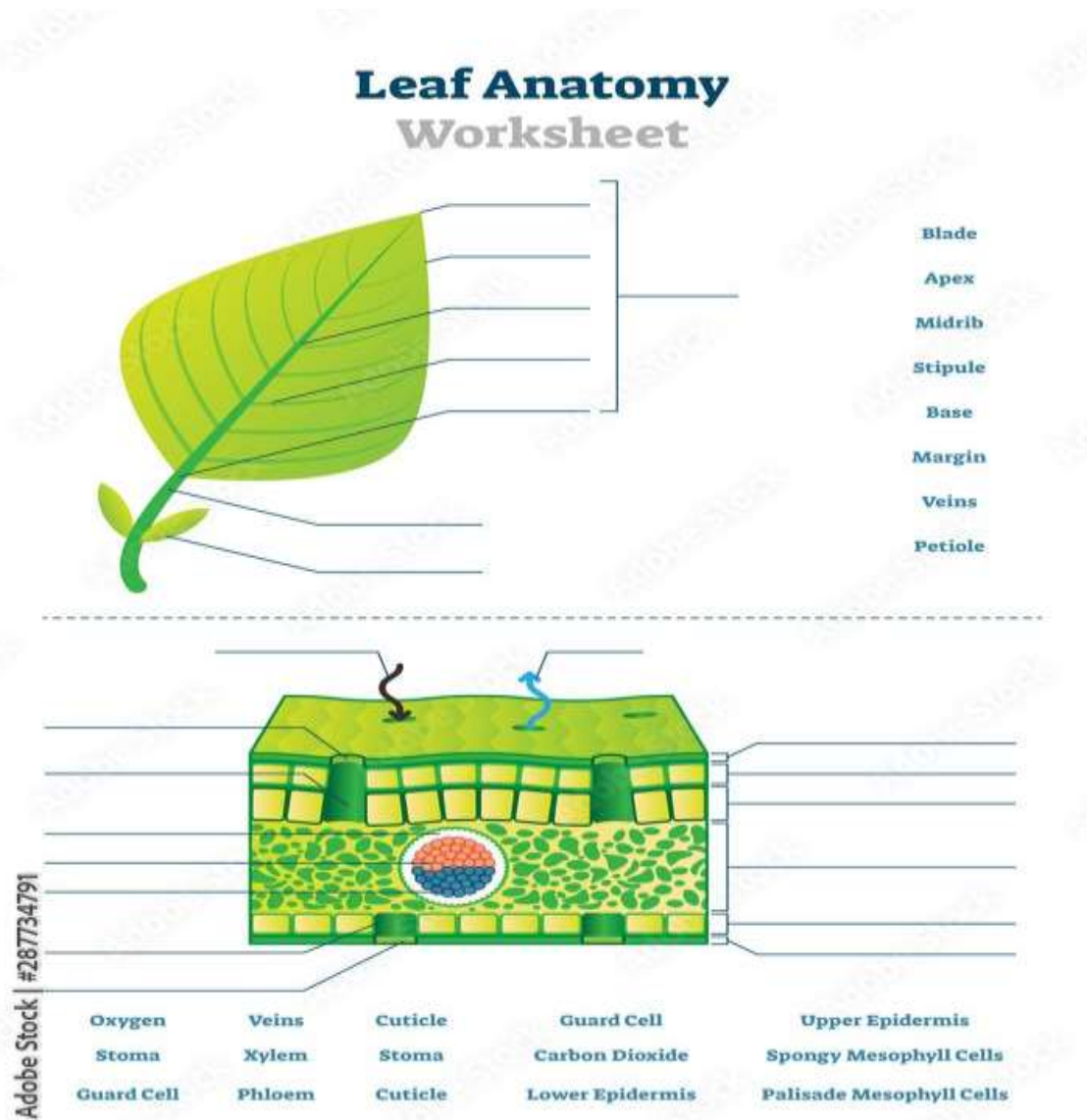


## Topshiriqlar.

1. Complete the sentence.

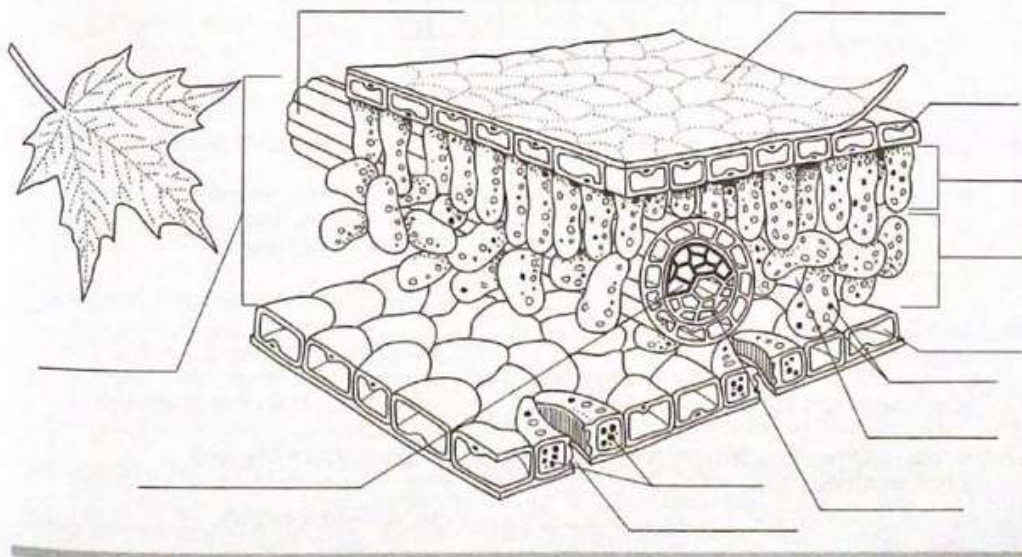


2. Complete the free areas.

## Cross Section of a Leaf

Label the parts of the leaf in the diagram. Give the purpose or function of each part.

- lower epidermis \_\_\_\_\_
- upper epidermis \_\_\_\_\_
- palisade layer \_\_\_\_\_
- cuticle \_\_\_\_\_
- stomata \_\_\_\_\_
- guard cells \_\_\_\_\_
- vein (fibrovascular bundle) \_\_\_\_\_
- spongy layer \_\_\_\_\_
- air space \_\_\_\_\_
- xylem \_\_\_\_\_
- phloem \_\_\_\_\_
- chloroplasts \_\_\_\_\_
- mesophyll \_\_\_\_\_



### 3. Quyidagi masalalarni mustaqil o`zingiz ishlang.

1. Tajriba uchastkasidagi har bir kaktusni tana massasi (tanasidagi suvdan tashqari) 50 kg, barcha o`simlik tasidagi suv miqdori 2000 l ni tashkil etsa, maydondagi barcha kaktuslarni umumiy og`irligini aniqlang.

2. O`rganilayotgan meksika kaktuslarini tanasidagi suvdan tashqari tana massasi 12 tupniki 60000 g bo`lsa, 1 tup kaktusni umumiy og`irligini aniqlang.

3. Umumiy og'irligi 250 kg bo'lgan meksika kaktuslarini tanasini necha % ni suv tashkil etadi.