

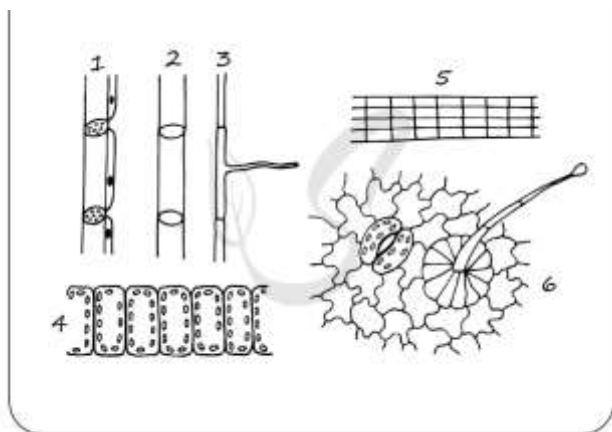
Topshiriqlar:

1. Write the names of plants that fit this definition instead of the dots.

1.....a weed of the genus *Taraxacum* in the Asteraceae family, is a perennial herb native to Eurasia but widespread throughout much of temperate North America. The most familiar species is *T. officinale*.

2.....is a root crop cultivated worldwide in temperate climates for its white, fleshy roots. Small, soft varieties are grown for human consumption, while large varieties are grown as feed for livestock.

2.



Yuqoridagi rasmda 1, 2, 3, 4 raqamlari bilan belgilangan o'simlik to'qimalari va ularning xususiyatlari o'rtasidagi muvofiqlikni aniqlang: birinchi ustunda berilgan har bir pozitsiyaga ikkinchi ustundan tegishli pozitsiyani tanlang.

XARAKTERISTIKASI

- A) assimilyatsion to'qima
- B) barglar tomon yo'nalgan oqim
- B) Lub tolalari shu strukturalar yaqinida joylashgan
- E) asosan o'lik hujayralar
- D) tomirlar va traxeyalar
- E) ildizning birlamchi qoplovchi to'qimasi

O'SIMLIK TO'QIMALARI

- 1) 1
- 2) 2

3) 3

4) 4

3.What number is used to indicate the structure consisting of dead cylindrical cells with wooden walls?

